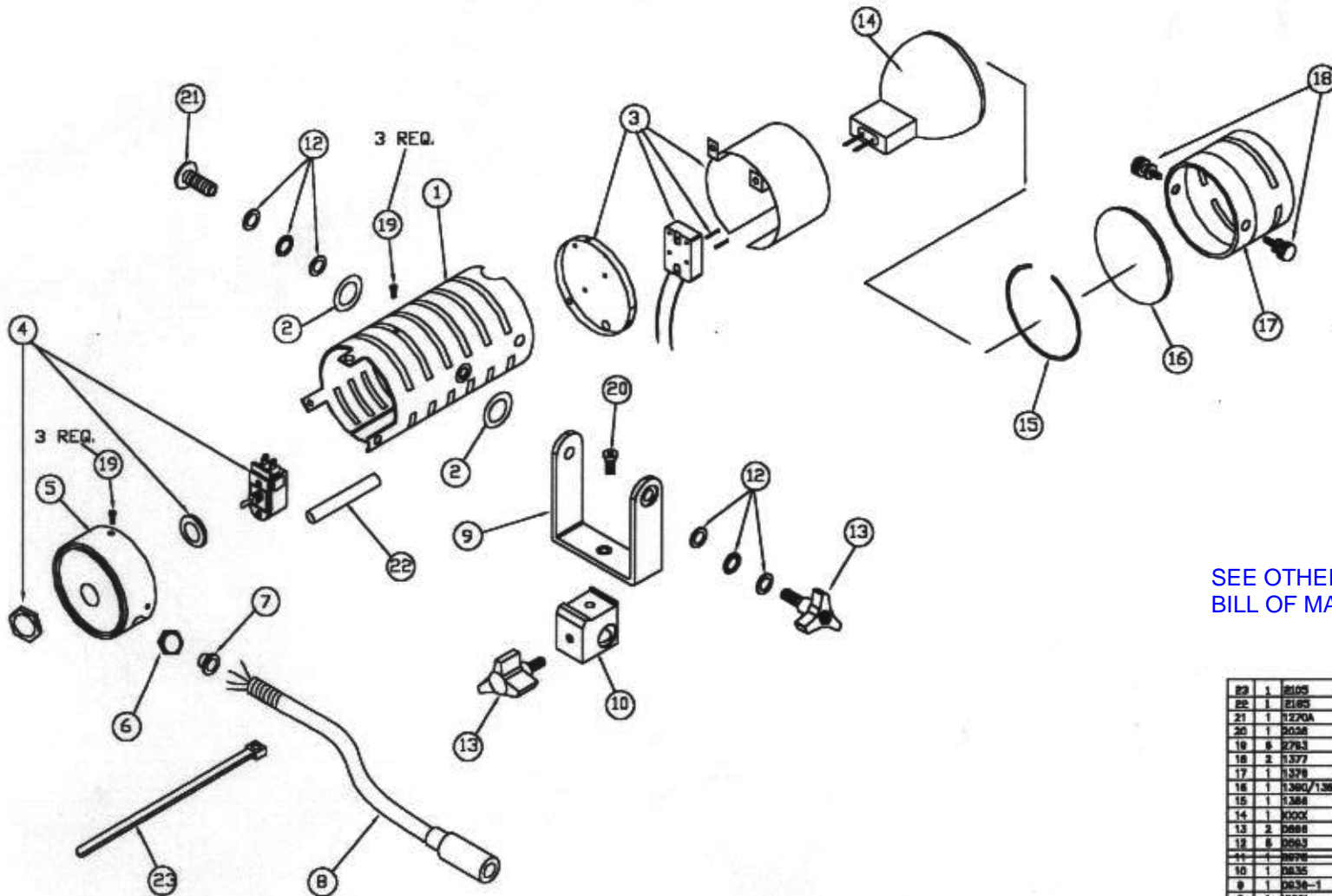


LT#	QTY	DESCRIPTION	DATE	REVISED BY
A				
B		ITEM #11 WAS DELETED ITEM #13 QTY 2 WAS 1	1/14/68	A.Z.
C		ITEM #10 2793 WAS 2084 ITEM #8 0838-1 WAS 0838	1/14/68	A.Z.



SEE OTHER SIDE FOR ENLARGED
BILL OF MATERIALS

23	1	2105	TZE WRAP
22	1	2185	TUBING, SHRINK 3/4" X 1 1/4"
21	1	1270A	1/4-20 X 1/2, TRUSS, S.S., PHIL.
20	1	2028	8-32 X 3/16, FLATHEAD (BLACK ANODIZED) SCREW
19	8	2793	3-58 X 1/4 BLACK ANODIZED, PHILLIPS
18	2	1377	WASHER SCREW (2)
17	1	1378	FRONT CAP
16	1	1380/1380	GLASS, FROSTED OR CLEAR
15	1	1388	SPRING, TO HOLD GLASS
14	1	K00X	BULB: 100W, BOW, 75W, 50W, 35W OR 20W.
13	2	0868	STAR KNOB
12	8	0863	BEARING & WASHER (8)
11	1	2076	WASHER FOR MOUNTING BLOCK - DELETED
10	1	0835	MOUNTING BLOCK
9	1	0838-1	U-BRACKET
8	1	K00X	CABLE & CONNECTOR CONFIGURATION OPTIONAL
7	1	0869	BUSHING
6	1	0869H	NUT
5	1	1374	END CAP
4	1	1370	SWITCH W/ RING AND NUT
3	1	1378A	REAR PLATE & SOCKET ASSEMBLY
2	2	0862	FIBER WASHER
1	1	1379	HOUSING


NEXT ASSEMBLY USE ON APPLICATION DATE BY	GENERAL RESEARCH LABORATORIES DIVISION OF FREDZULIN ELECTRONICS INC. 5 VALLEY STREET HAWTHORNE, NEW JERSEY 07608
MINIFILL ASSEMBLY DRAWING SIZE: 11 X 17 D 03893 SCALE: N/A	REV: C SHEET: 1 of 1

23	1	2105	TIE WRAP
22	1	2185	TUBING, SHRINK (1/4" X 1 1/4")
21	1	1270A	1/4-20 X 1/2, TRUSS, S.S., PHIL.
20	1	2028	6-32 X 3/16, FLATHEAD (BLACK ANODIZED) SCREW
19	6	2973	2-56 X 1/4 BLACK ANODIZED, PHILLIPS
18	2	1377	KNURLED SCREW (2)
17	1	1376	FRONT CAP
16	1	1390/1365	GLASS, FROSTED OR CLEAR
15	1	1386	SPRING, TO HOLD GLASS
14	1	XXXX	BULB: 100W, 80W, 75W, 50W, 35W OR 20W.
13	2	0896	STAR KNOB
12	6	0593	(BEARING & WASHER (4)-ASSY -) 1 BEARING, 2 WASHERS ea.
11	1	0978	KNOB, FOR MOUNTING BLOCK - DELETED
10	1	0935	MOUNTING BLOCK
9	1	0936-1	U-BRACKET
8	1	XXXX	CABLE & CONNECTOR CONFIGURATION OPTIONAL
7	1	0899	BUSHING
6	1	0899N	NUT
5	1	1374	END CAP
4	1	1370	SWITCH W/ RING AND NUT
3	1	1378A	REAR PLATE & SOCKET ASSEMBLY
2	2	0962	FIBER WASHER
1	1	1375	HOUSING
ITEM	QTY.	GRL P/N	DESCRIPTION:

UNLESS OTHERWISE SPECIFIED:
SURFACE ROUGHNESS IS AA⁸/MAX.
DIMENSIONS ARE AFTER FINISH.
DIMENSIONS ARE IN INCHES.
TOLERANCES ARE:

FRACTIONS	DECIMALS	ANGLES
±1/64	.XX ± .02	± 2'
	.XXX ± .005	

FILE NAME	
MFASSY	
APPROVALS	DATE
DRAWN RON MC CLOUD	10/10/95
REDRAWN A. Zagachtoko	1998
APPROVED X	X

GENERAL RESEARCH LABORATORIES
DIVISION OF FREZZOLINI ELECTRONICS INC.
5 VALLEY STREET
HAWTHORNE, NEW JERSEY 07506 

DO NOT SCALE DRAWING

MINIFILL ASSEMBLY DRAWING