

**Frezzi**<sup>®</sup>  
ENERGY SYSTEMS

## Super Sun Gun 200

MODEL SSG-200

ITEM (92701)

## OWNERS GUIDE

**Frezzi**<sup>®</sup> HMI  
Super-Sun Gun 200



**Frezzi**<sup>®</sup>  
ENERGY SYSTEMS

FREZZI ENERGY SYSTEMS  
5 VALLEY STREET  
HAWTHORNE, NJ 07506 USA  
[HTTP://WWW.FREZZI.COM](http://www.frezzi.com)  
E-MAIL [FREZZI@FREZZI.COM](mailto:FREZZI@FREZZI.COM)  
PHONE: (973) 427-1160  
FAX: (973) 427-0934

**NOTES:**

**SAFETY - READ BEFORE GOING FURTHER**

**CAUTION EXTREMELY HIGH VOLTAGE!**

**Disconnect lamp head from ballast prior to re-lamping.  
Do not open lamp head or ballast.  
Always operate with safety glass.  
Always use with a 3 wire, earth grounded power source.  
Do not disable ground connection.**

**CAUTION UV EXPOSURE**

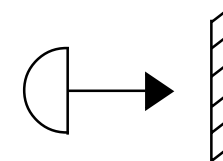
**Do not operate without protective safety glass.  
Do not look directly into uncovered light.**

**CAUTION HOT SURFACES**

**Do not touch body during operation.  
Operational temperature range: 200 - 300 degrees F.  
Replace any cracked glass or protective shielding before operation.  
Serious burn potential: Do not handle or replace bulb until lamp has cooled down.  
Do not block air vents while operating the light.  
Do not touch glass bulb element.  
Clean bulb prior to installation.  
Do not disable cooling fan in ballast.  
Do not block air vents on ballast.**

**CAUTION - SAFE MINIMUM DISTANCE**

**Do not place the lamp head closer than 3 feet from any object.**



**3 feet (1m)  
Min. distance to illuminated areas**

## NOTES:

## OPERATION

1. Make sure the power switch is turned to the **OFF** position on the Lamphead and ballast before connecting to the AC power source.
2. Mount light head on stand or other mounting configuration and adjust to desired position.
3. Plug the light head into a Frezzi AC or DC 200W ballast. Verify power switch is in the **OFF** position on the ballast.
4. Connect power to Frezzi 110-240 VAC or 22V-32V DC to the 200W ballast.

**Important: When using the DC ballast, observe proper polarity , PIN A(-) PIN B(+) with a voltage between 22V to 34V DC.**

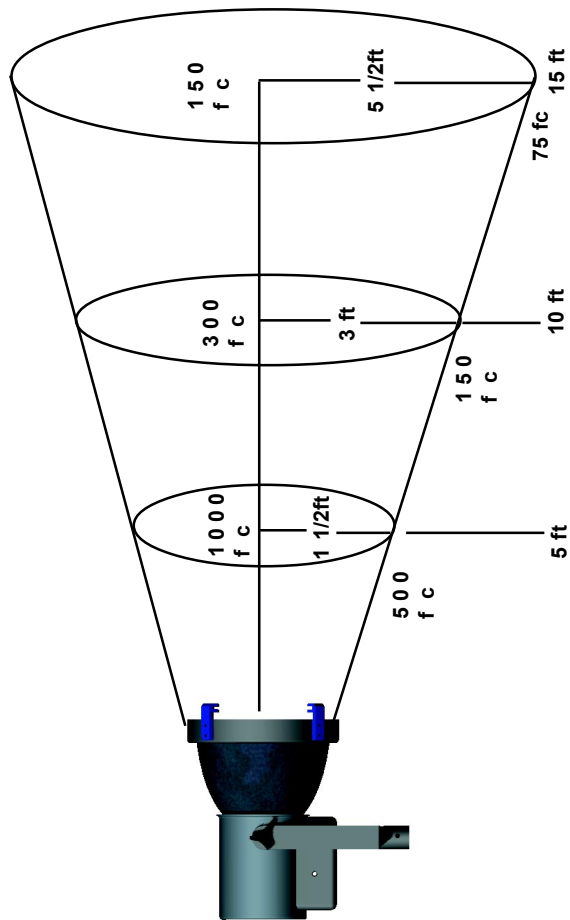
5. On the ballast, turn power switch to the **ON** position.  
(When using the DC ballast, press the **GREEN ON** button for **1 second** to turn on and press the **RED OFF** button for 1 second to turn off.
6. On the light head, turn the switch to the **ON** position and the lamp will ignite.

## NOTES:

The Lamphead tilt angle may be adjusted by loosening the side handles and tilting the lamphead to the desired position and re-tightening the side handles.

After re-tightening the handles, the handles may be repositioned by pulling them straight out away from the head and rotating them into the desired position without loosening the locked position.

The output of the lamp may be dimmed up to 50% using the dimmer control located on the AC or DC ballast after the lamp has come up to full intensity.

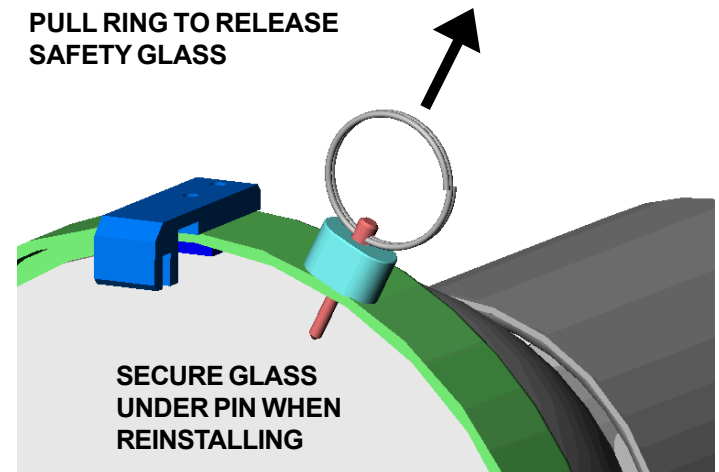


PHOTOMETRIC DATA  
FLOOD POSITION

## BULB REPLACEMENT

**WARNING: EXTREMELY HIGH VOLTAGE & HOT SURFACES!  
DISCONNECT LAMP HEAD FROM BALLAST  
PRIOR TO RE-LAMPING AND DISCONNECT BALLAST FROM  
POWER SOURCE.**

1. Turn off the power switch and disconnect lamp head from ballast. Allow unit to cool sufficiently before attempting to change bulb.
2. When unit is cool, pull the **SAFETY GLASS RELEASE PIN** from the front ring assembly and lift the accessory ear to remove the safety glass as shown below.
3. Gently pull the bulb out.
4. Replace with a Frezzi P/N FAB-200 (97104), MSR 200 HR bulb. **IMPORTANT:** Use a hand towel or cloth on glass envelope so bulb will remain clean and free of finger oils. Place bulb into socket base with base pins properly keyed. **Press firmly into socket so bulb base seats against the bottom of socket.** Improper bulb seating may cause the bulb pins to arc against the socket causing damage the bulb.
5. Replace safety glass and pull up **SAFETY GLASS RELEASE PIN** and push in safety glass securing under release pin.



## ABOUT FREZZI

Frezzi Energy Systems has been manufacturing portable lighting and power products for the broadcasting industry for over 60 years. Frezzi offers a complete line of high capacity battery packs, bracket systems, advanced chargers, battery belts, portable lighting, lighting kits and accessories. Contact us for more information on other Frezzi products at **(973) 427-1160** or visit our web site at **[HTTP://WWW.FREZZI.COM](http://www.frezzi.com)**

## INDEX

|                                    |         |
|------------------------------------|---------|
| SAFETY .....                       | PAGE 1  |
| INTRODUCTION .....                 | PAGE 2  |
| OPERATION .....                    | PAGE 3  |
| IMPORTANT NOTES ON BULB LIFE ..... | PAGE 4  |
| BULB REPLACEMENT .....             | PAGE 5  |
| ACCESSORY MOUNTING .....           | PAGE 6  |
| SPECIFICATIONS .....               | PAGE 7  |
| PHOTOMETRIC DATA .....             | PAGE 8  |
| SYSTEM DIAGRAM .....               | PAGE 9  |
| SERVICE .....                      | PAGE 13 |
| WARRANTY .....                     | PAGE 13 |

## SERVICE

Frezzi Energy Systems has a fully equipped service center. If you have a question about your Frezzi product or are in need of service support, please contact the Frezzi technical service center at: +1 (973) 427-1160 between the hours of 8:00am and 5:00pm EST.

## WARRANTY

One year on parts and labor. Please fill out the warranty card and return to Frezzi. NOTE: Frezzi can not guarantee unauthorized repairs done outside its facility.

## INTRODUCTION

NOTES:

Congratulations on your purchase of the brightest open-face 200W HMI in the world. The **SSG-200** light is the newest addition in a family of award winning compact and portable HMI lights from Frezzi. The Frezzi HMI line provides unrivaled power and performance because of its high output reflector and rugged, light weight design. The **SSG-200** is color balanced at 5600 degrees K providing true daylight color balance light without the need of a corrective filter which reduces light output.

Frezzi's 200 Watt HMI engineered for news gathering, produces a wide flat optical field providing a light output unmatched in its size/weight category. At a distance of 10 feet the Frezzi-Super Sun Gun 200 produces up to 2 times the output of a 400W par HMI fixture with a wide angle lens. This incredible output is the direct result of Frezzi's computer optimized 5" open face parabolic reflector.

This new 200 Watt fixture is constructed with a strong aluminum housing, is lightweight and compact, weighing in at only 3½ pounds. The new dimmable Frezzi AC and DC 200W electronic ballasts are the smallest available in today's market, and may be used worldwide.

The Frezzi 200 Watt HMI is a portable light designed as a time saver for ENG/EFP photographers who will be able to quickly deploy the best available light at a news or media event with AC or DC power.

The original Mini-Arc 24W marked Frezzi Energy Systems debut of its revolutionary HMI on-camera light design. This signaled the first-time use of a miniature HMI on-camera light which provided cameramen with high output, daylight temperature light, in a single, self-contained unit.

Frezzi Energy Systems has been manufacturing portable lighting and power products for the broadcasting industry for over 60 years. Frezzi offers a complete line of high capacity battery packs, bracket systems, advanced chargers, battery belts, portable lighting, lighting kits and accessories. Contact us for more information on other Frezzi products.

## IMPORTANT NOTES

### SAVE THE BULB BOX:

When **shipping or transporting** the lamp over long distances, it is recommended to **remove the bulb** from the lamphead and **store separately**. Use the bulb box which shipped with the unit to store the bulb. After transporting the lighthead, replace the bulb properly seating it firmly in the socket. If the bulb is not fully seated in the socket, the lamp may not operate correctly and shorten the bulb life.

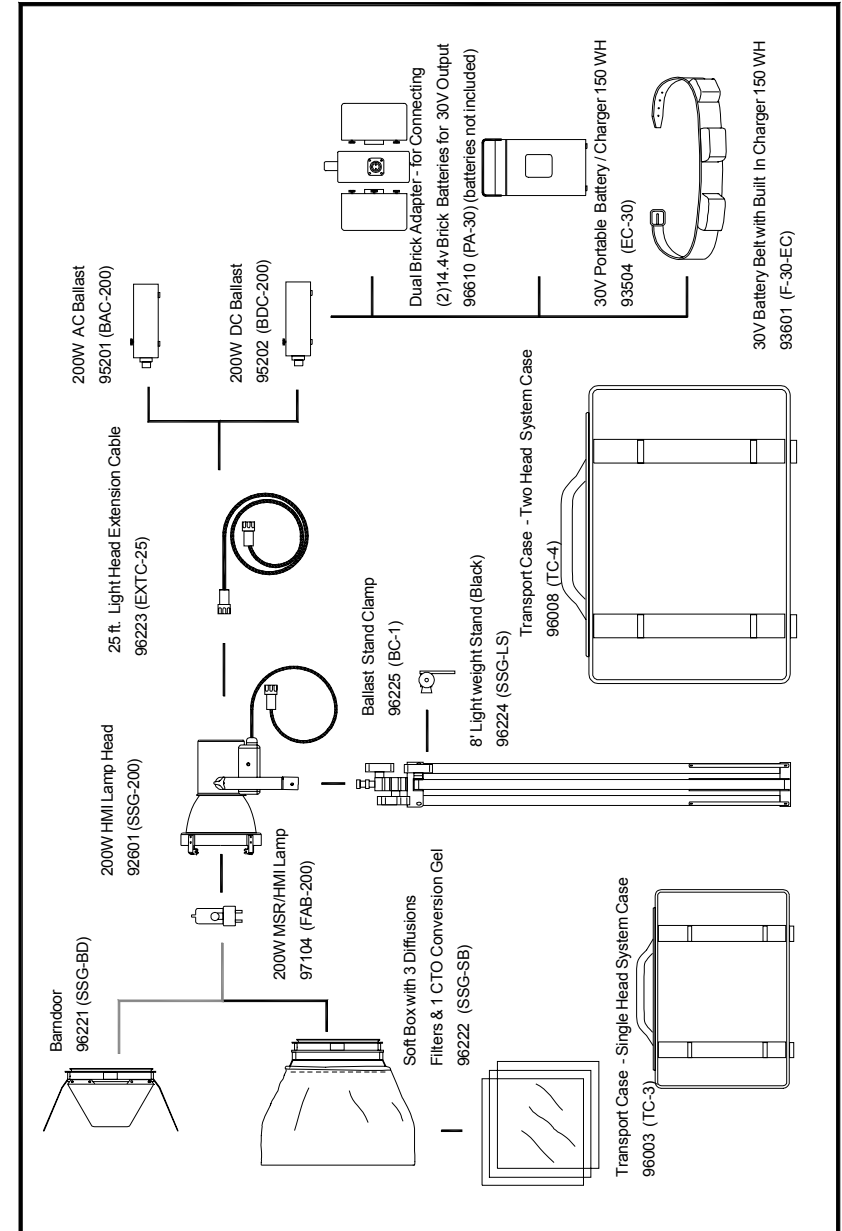
### CHECK THE BULB SEATING

Occasionally check that the bulb is **fully seated in the socket** according to the directions on the next page.

### IMPROVE THE BULB LIFE

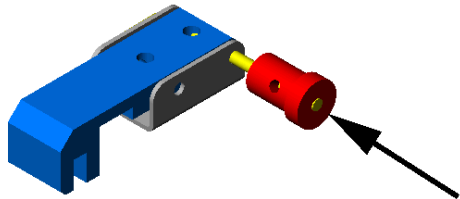
To preserve bulb life, **do not toggle the lamp on and off quickly**. Always allow the lamp to warm up completely prior to turning off (approximately 3 minutes). Before restriking, allow bulb to cool for 30 seconds.

## SYSTEM DIAGRAM

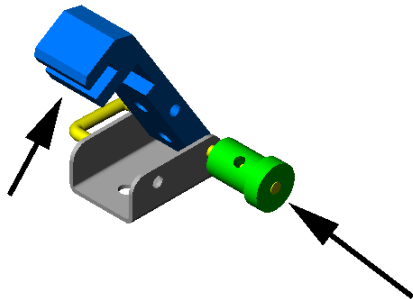


## ACCESSORY MOUNTING

To install the Barndoor, Soft box, or Filters, press the **EAR RELEASE** button and lift the **TOP EAR** as shown below. Install accessory and close **TOP EAR** making sure to keep the **EAR RELEASE** button depressed while closing lock ear in place.



**PUSH IN AND LIFT EAR**



**HOLD IN BUTTON WHEN CLOSING**

## SPECIFICATIONS

### Light Head

Size: 8.56 x 9.50 inches  
Weight: 3.5 pounds / with cable 4 1/4 pounds  
Cable Length: 12 Feet  
Replacement Lamp: MSR 200 HR [Frezzi P/N 97104 (FAB-200)]  
Life: Approximately 200Hrs

### AC Ballast:

Size: 7.5 x 5.0 x 2.0"  
Weight: 2.0 pounds  
Input Voltage: 110/240 VAC AUTO LINE SELECT  
Fuse: 3.15Amp Time Delay 5x20mm

### DC Ballast

Input Voltage: **22 - 34 VDC**  
Polarity: **A (-) B(+)**  
Size: 5.75 x 4.125 x 2.375  
Weight: 2.5 pounds